

# THINK OUTSIDE THE PROVERB!

**YOUNG LEARNERS  
LESSON PLAN**



**Express Publishing**

## **OBJECTIVE**

- To complete the well-known proverbs and draw a relevant picture.
- Students will develop the following skills:
  - **Creative Expression** – Encouraging original interpretations of well-known proverbs to promote divergent thinking.
  - **Collaboration & Communication** – Engaging in pairwork to exchange ideas, refine thoughts and provide constructive feedback before individual tasks.
  - **Vocabulary Building** – Expanding students' word knowledge through exposure to proverbs, essential vocabulary, and contextual learning.
  - **Interpretative Skills** – Strengthening students' ability to understand and convey deeper meanings through words and visuals.

**TOTAL DURATION: 80 MINUTES**

## **MATERIALS AND PREPARATION**

1. Download and print one worksheet per student.
2. Download and prepare relevant materials, e.g. cards etc.
3. Ensure each student has colourful markers and crayons.



## PRE-TASK

(DURATION: 15 MINUTES)  
WORK AS A CLASS

1. Tell students that they will be taking part in an exciting international contest, competing with students from all over the world! Their task is to complete well-known proverbs in a creative way and illustrate their meaning. Ten winners will be selected, and they will receive gift cards as a reward. Inform students that the winning drawings will be turned into stickers, which Express Publishing will share with people from over 130 countries. Encourage students to do their best and have fun with the challenge!
2. Ask the class if they know what a **proverb** is. Then, explain that a proverb is a short, well-known saying that gives advice. It's often a simple and easy way to understand a lesson about life. For example, "**Better late than never**" means that it's better to do something late than not do it at all.
3. Encourage students to share any famous proverbs they know, either in English or their first language (L1).

(DURATION: 15 MINUTES)  
WORK AS A CLASS

THE FIRST  
HALF  
OF THE  
proverb

1. Introduce the new vocabulary:  

<b>Early bird</b>	<b>Win</b>
<b>Leopard</b>	<b>Catch</b>
<b>Slow and steady</b>	<b>Change</b>
2. To check understanding, hold up the flashcards and ask students to guess the word based on the image, or vice versa.



## THE SECOND HALF OF THE proverb

**(DURATION: 10 MINUTES)**  
**WORK IN PAIRS**

1. Hand out the blue cards and the green cards.
2. Tell students to match the green and the blue cards.
3. Read all second parts out loud to model pronunciation (green cards) and ask students to repeat.
4. Instruction - checking questions:
  - a. How many people will work together?  
*(Answer. two.)*
  - b. What are the colours of the cards?  
*(Answer. Green and blue.)*
  - c. What will you match?  
*(Answer. The green cards with the blue cards.)*
5. Monitor and support. Walk around the class and assist students with the matching.

**(DURATION: 10 MINUTES)**  
**WORK INDIVIDUALLY**

## THINK OUTSIDE THE proverb

1. Lift each of the purple cards and model the pronunciation. Then, ask students to repeat while holding the card with the relevant picture.
2. Hand out the purple cards. Instruct students to match their purple card with a green card of their choice to complete their proverb!
3. Remind students they will work individually in this part.



3. Instruction - Checking questions:
  - a. What are you going to complete?  
*(Answer. A proverb.)*
  - b. What colour is the first half?  
*(Answer. Purple.)*
  - c. With what will you match it?  
*(Answer. With the green.)*
4. Distribute the worksheets and glue.
5. Ask students to stick their purple and green cards on the relevant place of the worksheet.
6. Monitor and support: Walk around and assist students as needed. Help students to complete their personal details on the worksheet.

**DRAW  
THE  
proverb**

**(DURATION: 20 MINUTES)**  
**WORK INDIVIDUALLY**

1. Once students have completed their proverbs, instruct them to think about how they could visually represent the message.
2. Ask the students to take out their markers.
3. Students will draw an illustration of their completed proverbs.
4. Monitor & Support: Provide ideas for students who might need help translating their ideas into drawings.

**(DURATION: 10 MINUTES)**  
**WORK IN GROUPS**

**REVEAL  
THE  
proverb**

1. Ask the students who have chosen the proverb "The early bird catches" to raise their hands. Give each group a full proverb and ask them to keep it hidden.



2. Ask the first group of students to come forward and silently act out the meaning of their assigned proverb using pantomime. For example, if the proverb is "The early bird catches the worm," they might mime waking up early, being a bird, finding a worm and eating - all without speaking. The rest of the class should try to guess the proverb based on their actions.
3. Apply the same approach to the remaining two proverbs.

Scan the worksheets along with the submission form and forward them to [epcompetitions@expresspublishing.co.uk](mailto:epcompetitions@expresspublishing.co.uk). **All submissions must be accompanied by clear scanned pictures of the students' worksheets.**

**Evaluation Criteria:**

Inform students that their submissions will be judged based on the following criteria:

- Creativity and originality of the design and the proverb.
- Clarity of the drawing and how well it matches the proverb.





# CARDS

"The early bird catches the

"A leopard never changes its

"Slow and steady wins the

prize."

coffee."

crown."

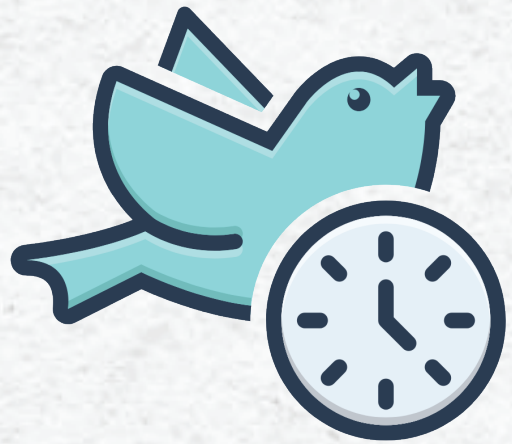
parking spot."

glasses."

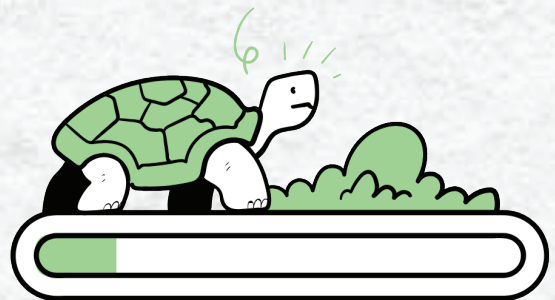




**Early Bird**



**Slow and steady**



**Leopard**



**Win**



**Catch**



**Change**





STUDENT'S NAME: .....

SCHOOL NAME: .....

My proverb is...

[Dashed purple rectangular box for writing a proverb]

[Dashed green rectangular box for writing a proverb]

My proverb's drawing is ...

[Large yellow rectangular box for drawing]





# SUBMISSION FORM



**PLEASE COMPLETE A SEPARATE SUBMISSION FORM FOR EACH LEVEL.**

**SCHOOL NAME** .....

**GRADE**

- YOUNG LEARNERS
- A LEVEL
- B LEVEL
- C LEVEL

**TEACHER** .....

**TOTAL NUMBER OF ENTRIES** .....

Submission forms must be accompanied by at least one high-resolution photo of each participant's scanned worksheet. Send entries to [epcompetitions@expresspublishing.co.uk](mailto:epcompetitions@expresspublishing.co.uk).

**WINNERS WILL BE NOTIFIED ON JUNE 5, 2025.  
STAY TUNED AND GOOD LUCK!**

