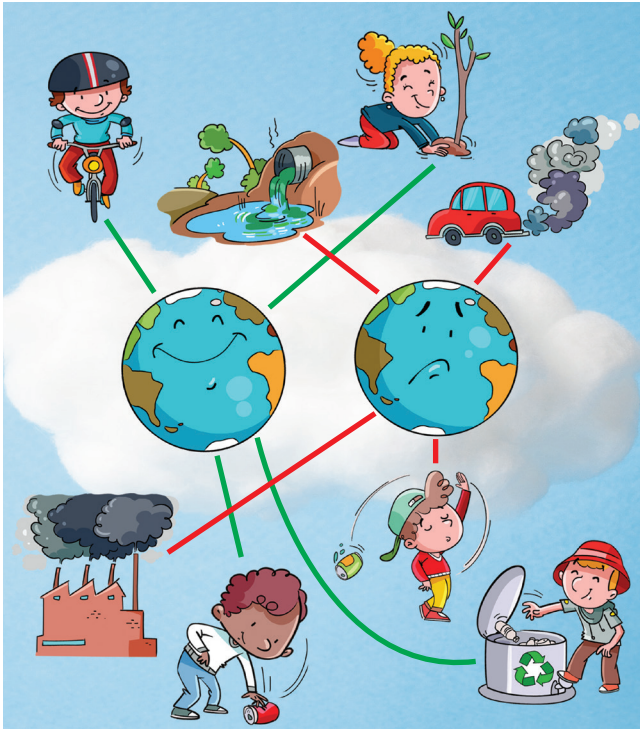


# Earth Day Key

## Primary 1

Ex.1



## Primary 2

Ex.1

- |          |           |          |
|----------|-----------|----------|
| 1 April  | 5 nature  | 9 save   |
| 2 Earth  | 6 ocean   | 10 trees |
| 3 green  | 7 plant   |          |
| 4 litter | 8 recycle |          |

## Primary 3

Ex.1

- |                          |             |
|--------------------------|-------------|
| 1 22 <sup>nd</sup> April | 3 flowers   |
| 2 ride their bikes       | 4 3 o'clock |

Ex.2

A, C

## Primary 4

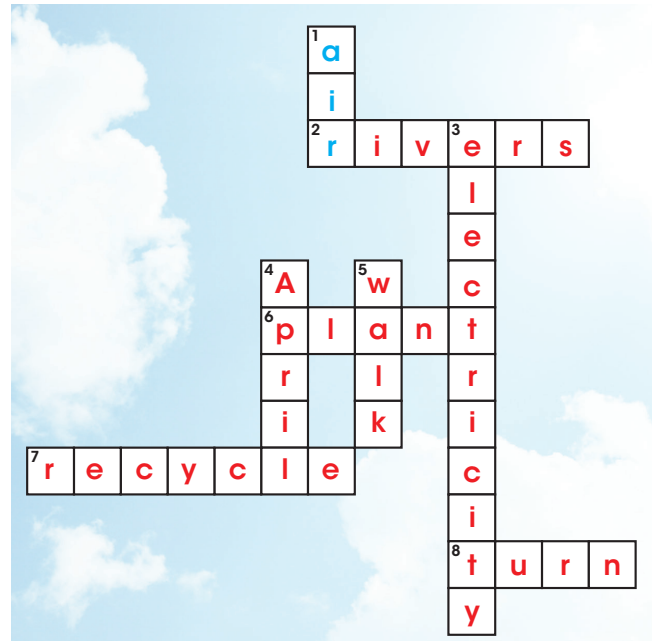
Ex.1

Across

- 2 rivers
- 6 Plant
- 7 recycle
- 8 turn

Down

- 1 air
- 3 electricity
- 4 April
- 5 Walk



Ex.2

- a 4      b 3      c 5      e 2

## Primary 5

Ex.1

- |            |                  |
|------------|------------------|
| 1 tap      | 7 oxygen         |
| 2 taking   | 8 closer         |
| 3 leave    | 9 clean-up       |
| 4 unplug   | 10 Participating |
| 5 includes | 11 protect       |
| 6 damage   | 12 fitter        |

- |     |     |     |
|-----|-----|-----|
| 1 A | 3 D | 5 B |
| 2 E | 4 C | 6 F |

# Earth Day Key

---

## Primary 6

### Ex.1

- |         |         |         |
|---------|---------|---------|
| 1 Lydia | 4 Harry | 7 Tina  |
| 2 Tina  | 5 Tom   | 8 Harry |
| 3 Tom   | 6 Lydia |         |

### Ex.2

Pupils' own answers.